

SPIDR™ Demo Installation Instructions

Version 1.0

July 2006

Information required for Installation

Location of folder for installing SPIDR Software and Data
(default: C:\Program Files\Alion\SPIDR)

Table of Contents

INFORMATION REQUIRED FOR INSTALLATION 2

Table of Contents 3

RUNNING THE SPIDR DEMO INSTALLATION 3

Hardware Considerations 3

Starting the Installation Program 3

Running the SPIDR Demo Installation

The SPIDR Demo Installation consists of several smaller installations. When complete all of the components necessary to successfully run SPIDR will be installed.

Hardware Considerations

- IBM PC or compatible
- Windows 2000 or Windows XP Operating System
- 256 Mb RAM
- 30 Mb available disk space

Starting the Installation Program

1. Close all open applications.
2. Unzip the downloaded SPIDRDemo.zip file to a folder on the desktop (or other convenient location).
3. Open the folder and locate the file Install.exe.
Double click **Install.exe**

If the .NET Framework is not installed, you will be prompted to download it from Microsoft (www.microsoft.com) and install it.

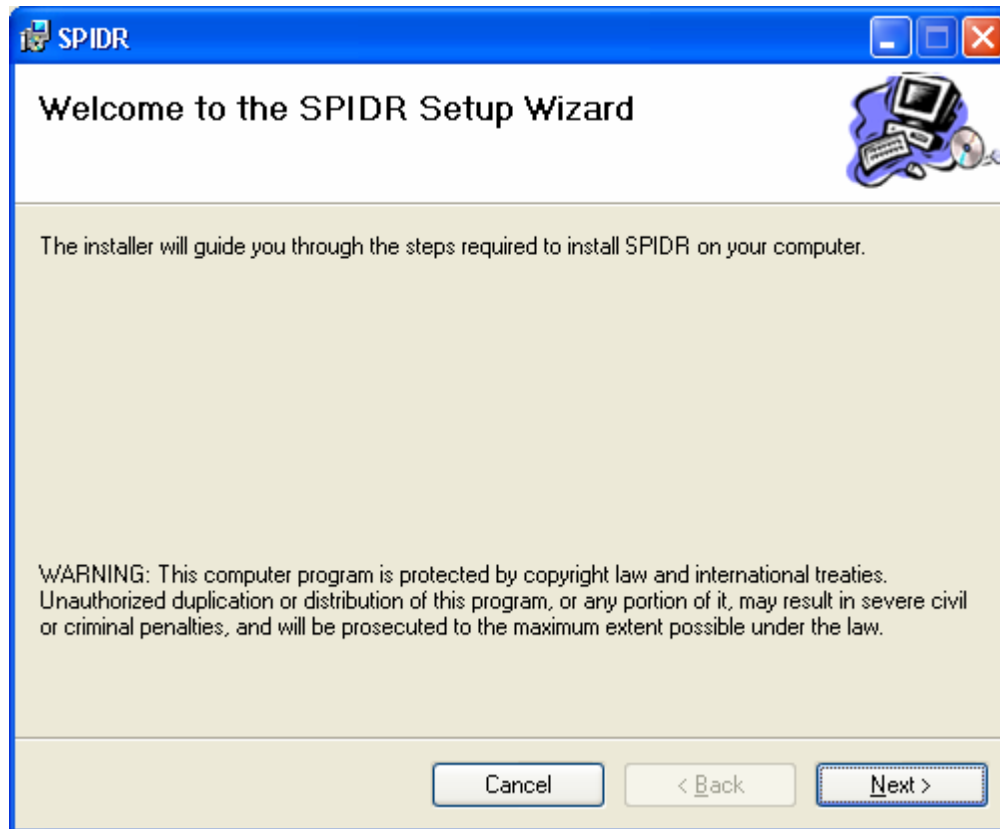
4. The SPIDR Demo Installation will continue with the installation of MSDE.



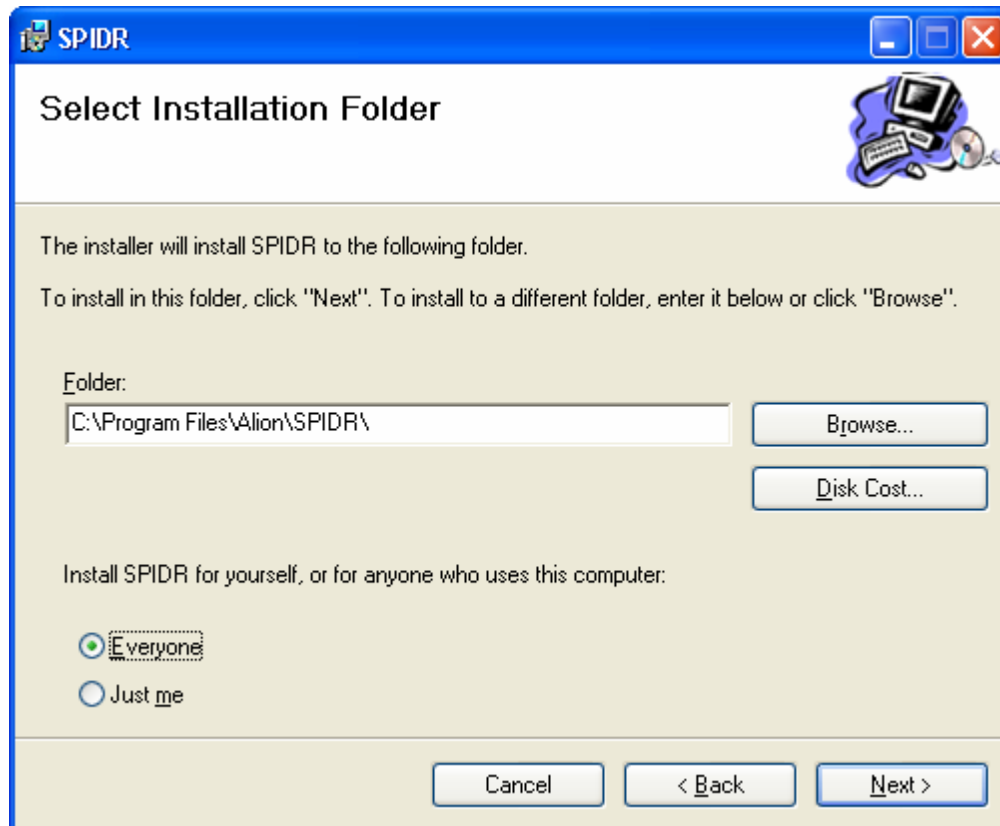
MSDE Setup – Setup Complete

When the installation is complete, the completion dialog appears. Click OK to go to the next phase of the installation.

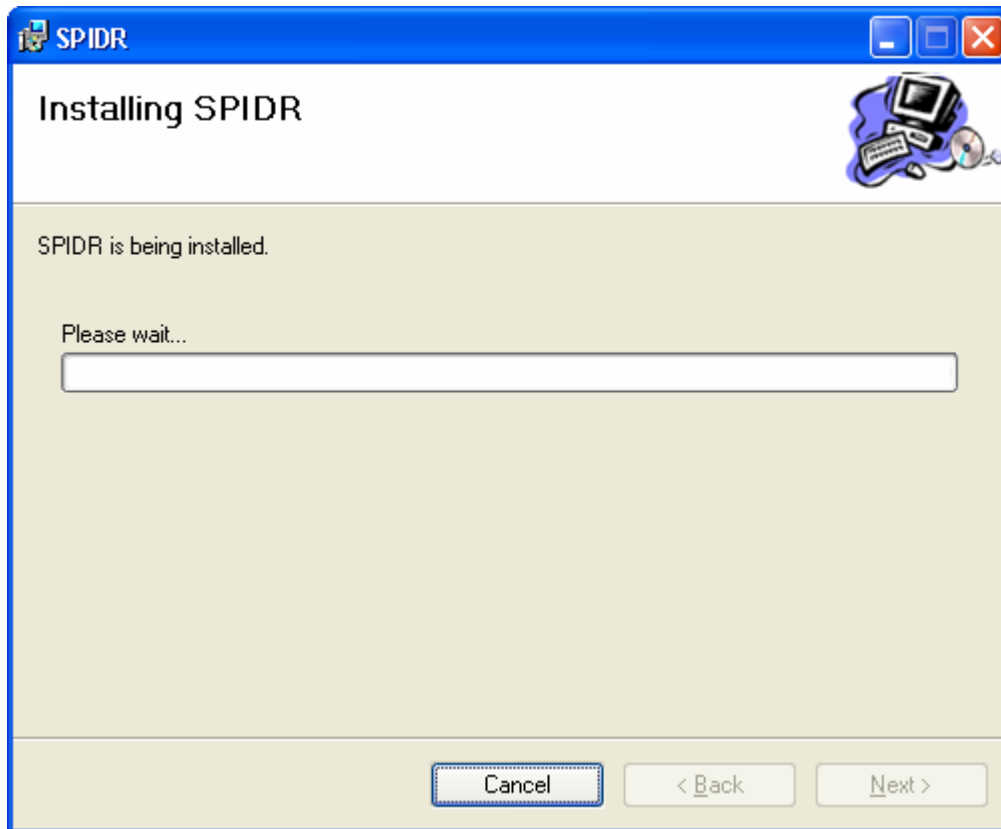
The SPIDR Demo Installation will continue with the installation of SPIDR.



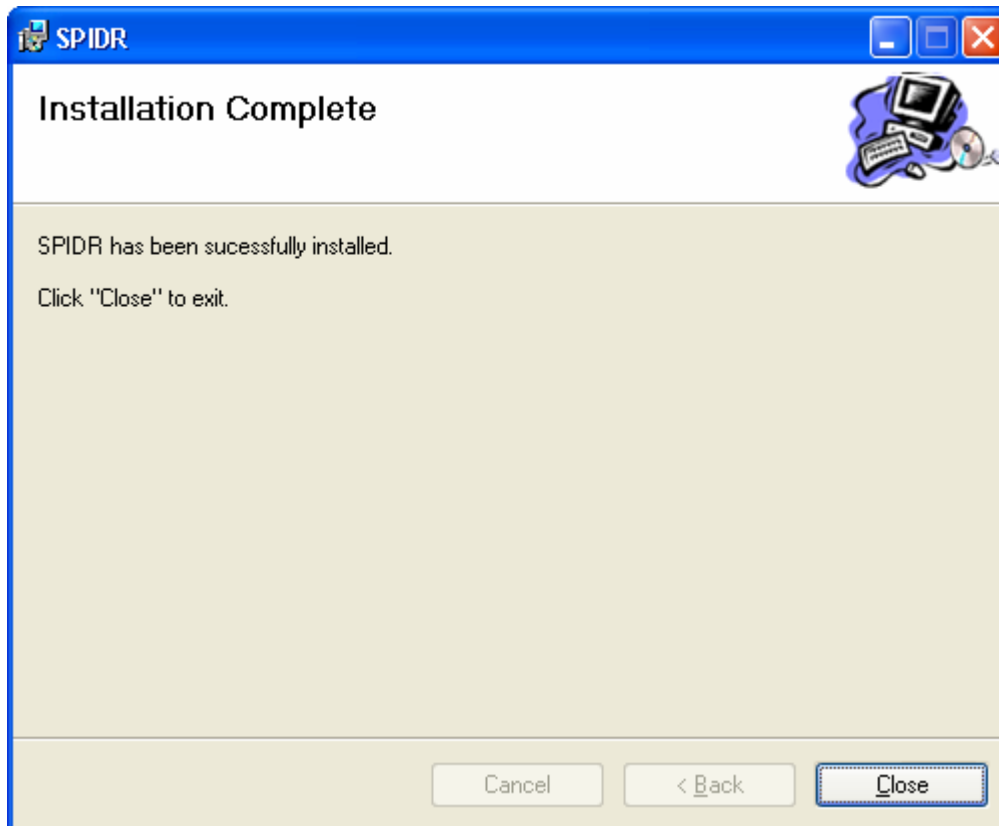
5. Click **Next**.



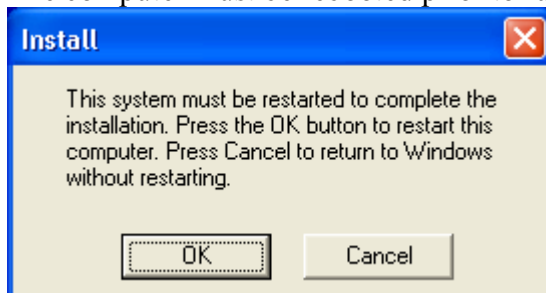
6. Enter the location of the folder to which the installation program should put the SPIDR Demo.
Select either of the following options:
Everyone – If anyone who logs onto the computer should be able to use the software (recommended)
Just me – If only the login used for installation will be able to use the software.
Click **Next**.



7. Installation Progress bar will appear.



8. The installation is complete. Click **Close**.
9. The computer must be rebooted prior to running the application.



Select either of these options:

OK – The computer will be rebooted immediately

Cancel – you must reboot the computer manually.